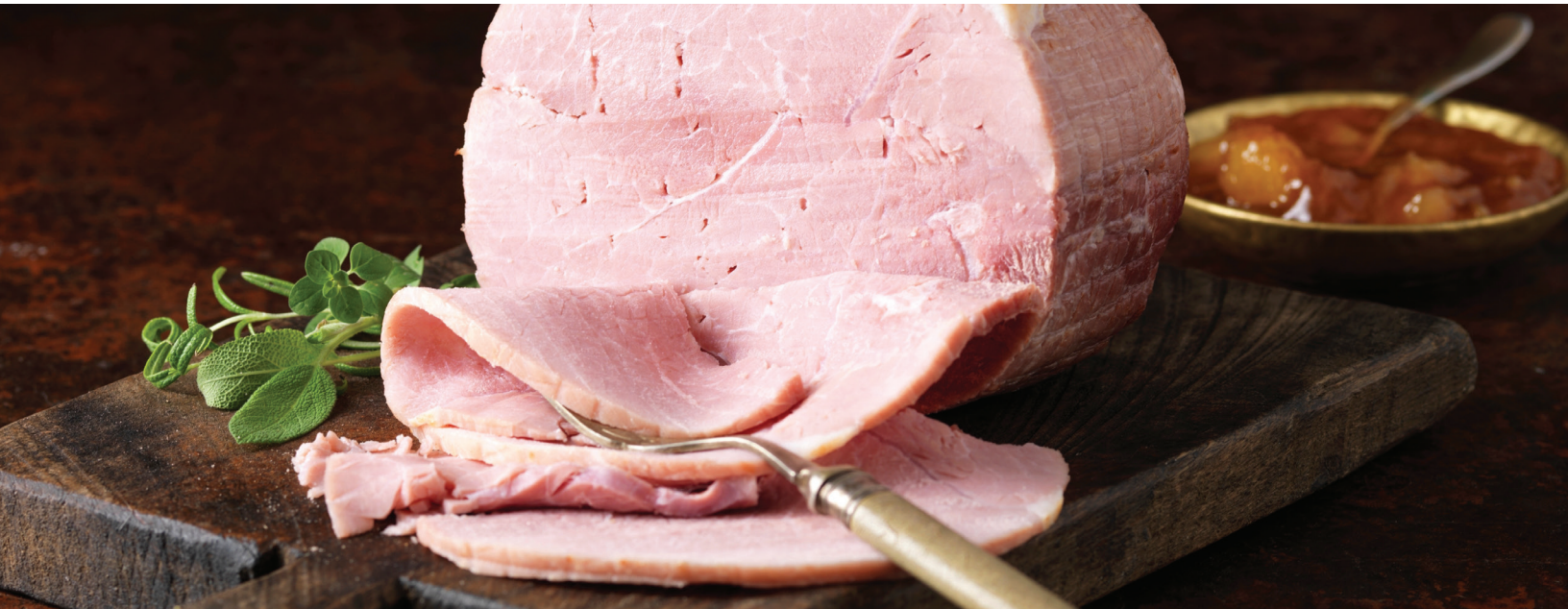




ARE YOU GETTING MAXIMUM PRODUCTIVITY FROM YOUR STAFF?



Available at no
cost to US Foods®
customers

A self-evaluation tool to assess foodservice staffing and optimize your productivity, **LaborFocus™** is a software program that helps you evaluate labor patterns in all areas of your foodservice operation. It's quick and easy to use.

WITH LABORFOCUS, YOU GET:

A Labor Analysis Snapshot: LaborFocus analyzes labor patterns and productivity, including full-time to part-time staffing, overtime, labor dollars, allocation of labor hours and more.

- Understand how your labor costs and staffing compare to the industry standard through our proprietary database
- Forecast how a desired change in staffing impacts your bottom line

An Executive Summary: LaborFocus provides an overview and executive summary for a professional presentation to your executive leadership team.

Detailed Graphs: LaborFocus produces detailed graphs that help you visualize how your department compares within the industry.



How does it work?

- Enter labor data information into the LaborFocus™ software
- Enter actual labor hours worked for a one-week period
- LaborFocus compares every service area of your department and delivers clear, well-organized financial and statistical data
- Analysis reports provide direction on staffing opportunities
- Create an action plan around these opportunities

ACTIONABLE INFORMATION

Use this powerful tool to better understand the labor costs associated with all positions; compare staffing to industry database in all your service areas; and justify a need to increase, decrease or maintain current staffing levels. You can even use this tool to determine the cost of your bottom line for any possible “what-if” scenarios.

Get started with LaborFocus today!

LaborFocus™ is available at no charge, exclusively to US Foods® customers. For more information about Impact and the entire Business Solutions Portfolio of Cost Management Solutions, email businesssolutions@usfoods.com or contact your US Foods representative.

